



Sjejel ju`un b'a Tojol-ab'al

enseñanza en Tojol-ab'al



Tojol-b'al de Plan de Ayala

Sjejel ju`un b'a Tojol-ab'al

Enseñanza en Tojol-ab'al

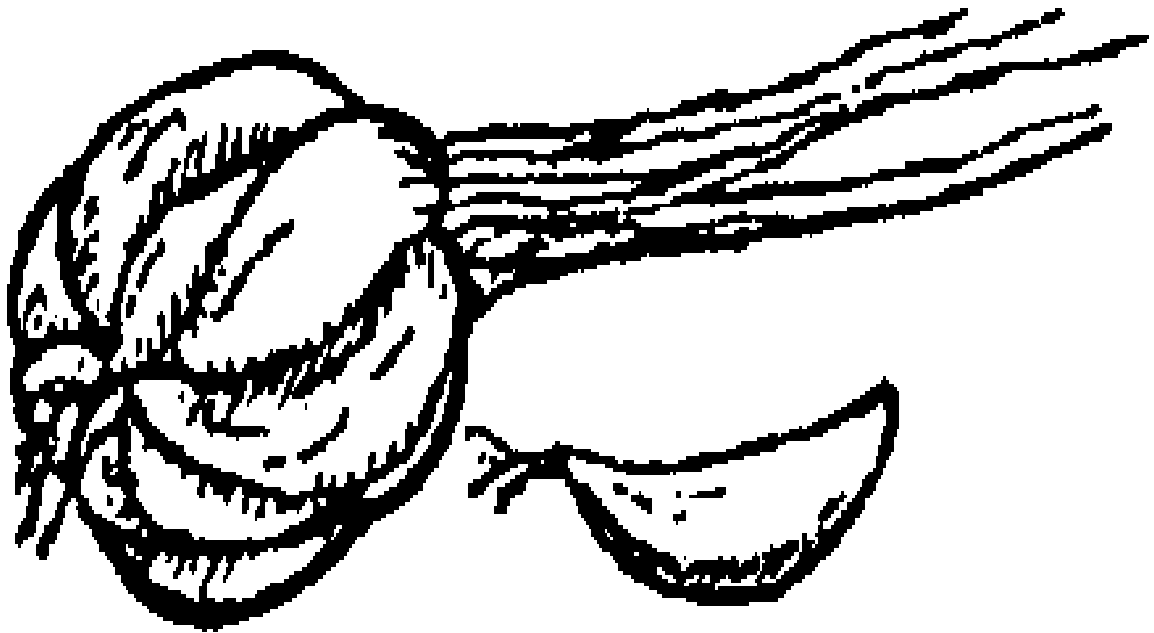
Pedro Hernández Jiménez

Tojol-ab'al de Plan de Ayala

**Borrador
Noviembre, 2010**

A a

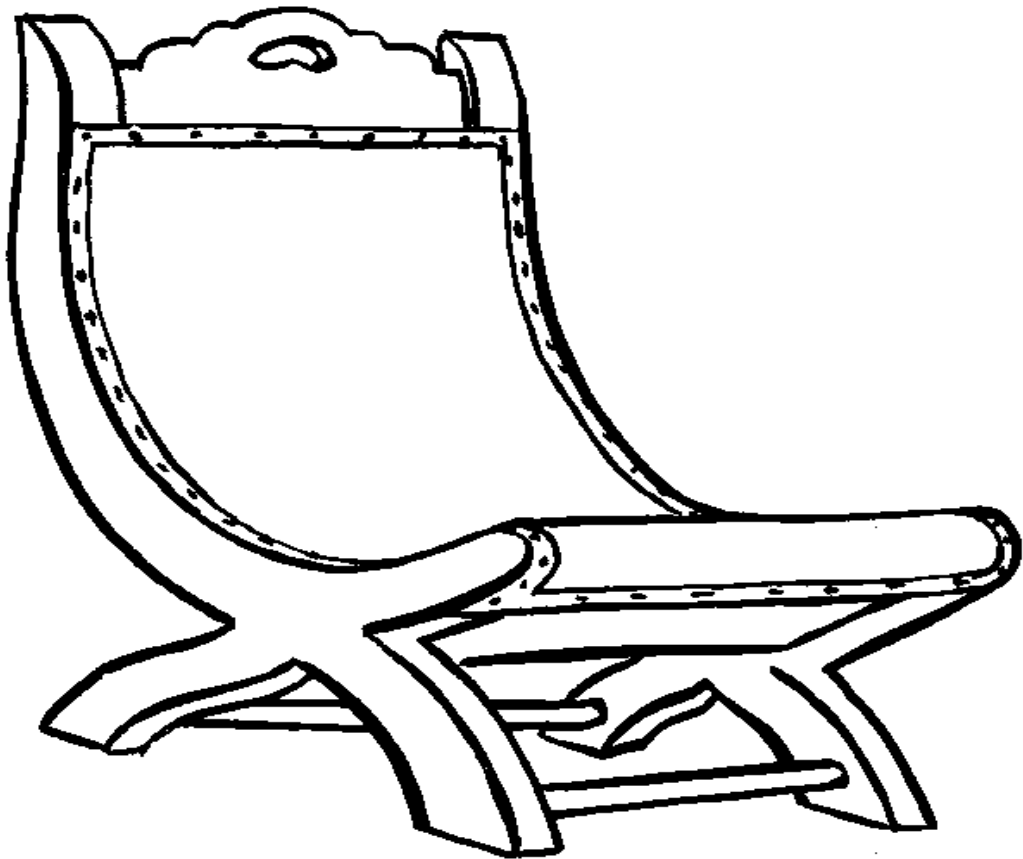
Axux



Ja axuxi wa xmakuni b'a yaj altsilil.

B b

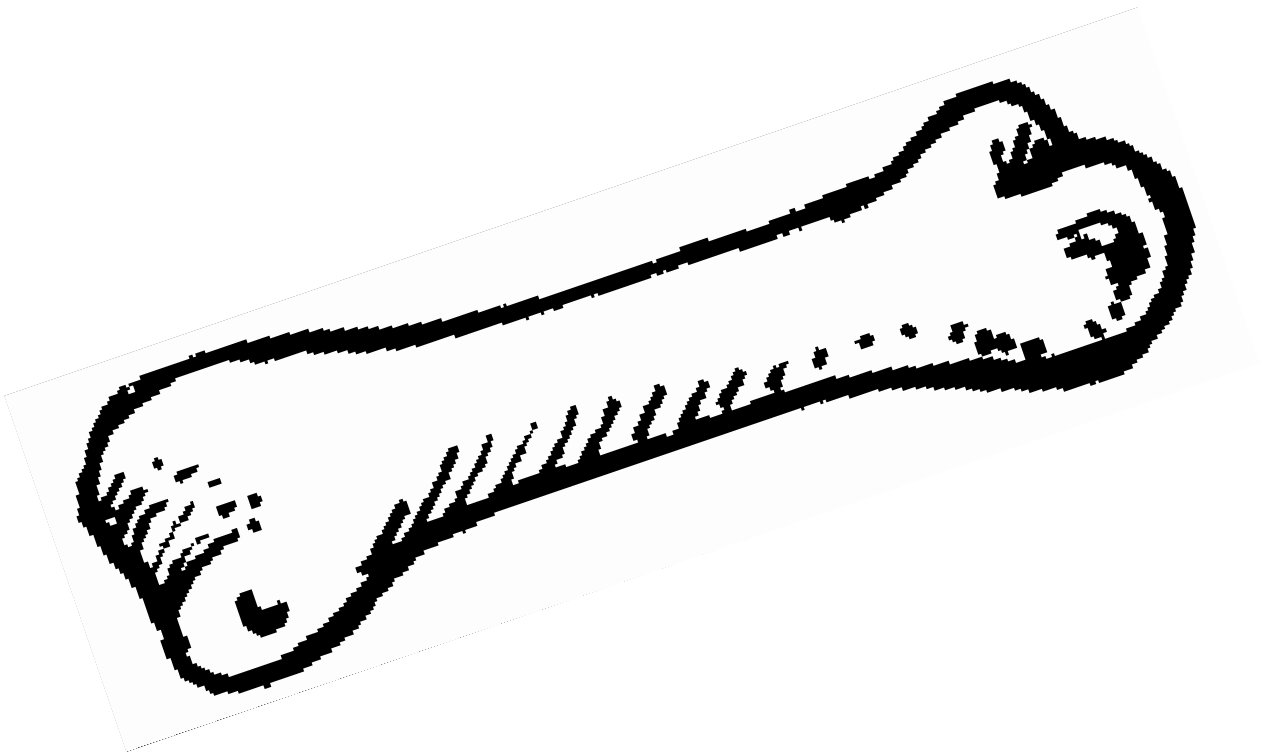
butak



Jel tsamal kulanel ja b'a butaki.

B' b'

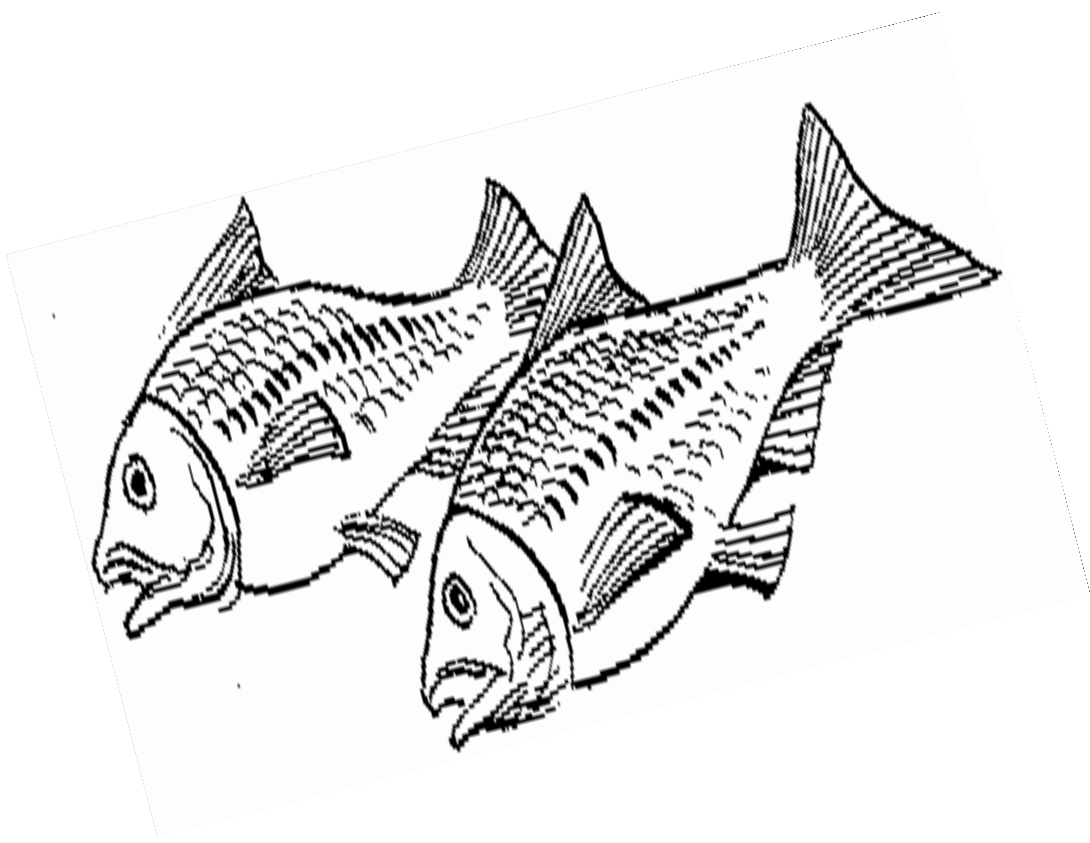
b'ak



Ja ta ts'i wa sk'uxu b'ak.

CH ch

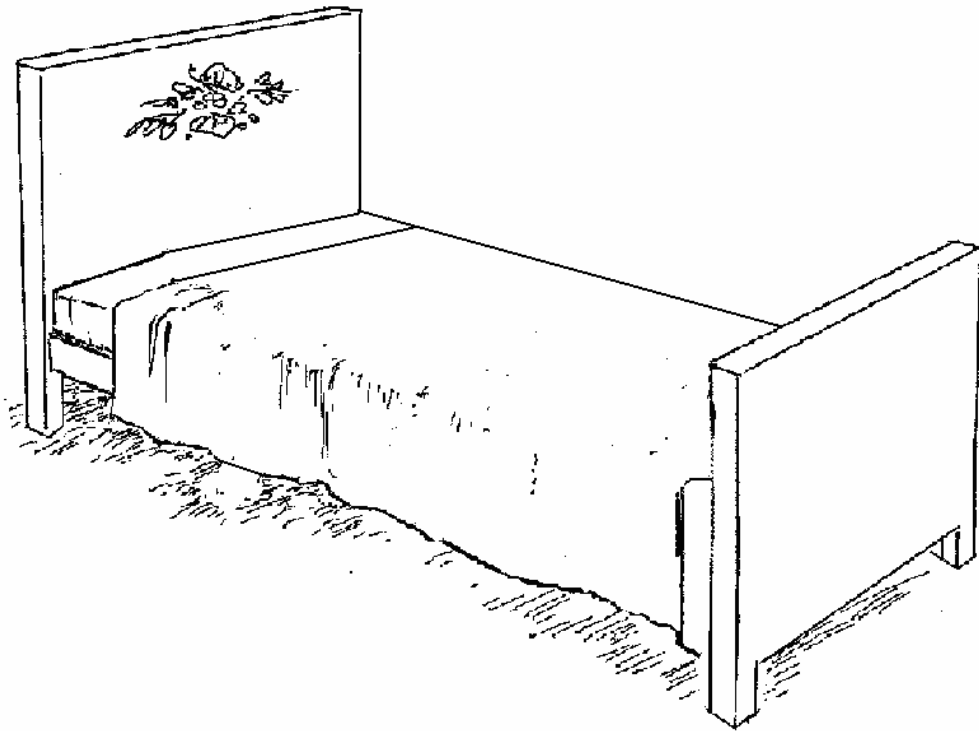
chay



Jel x-ajb'ani ja chayi.

CH' ch'

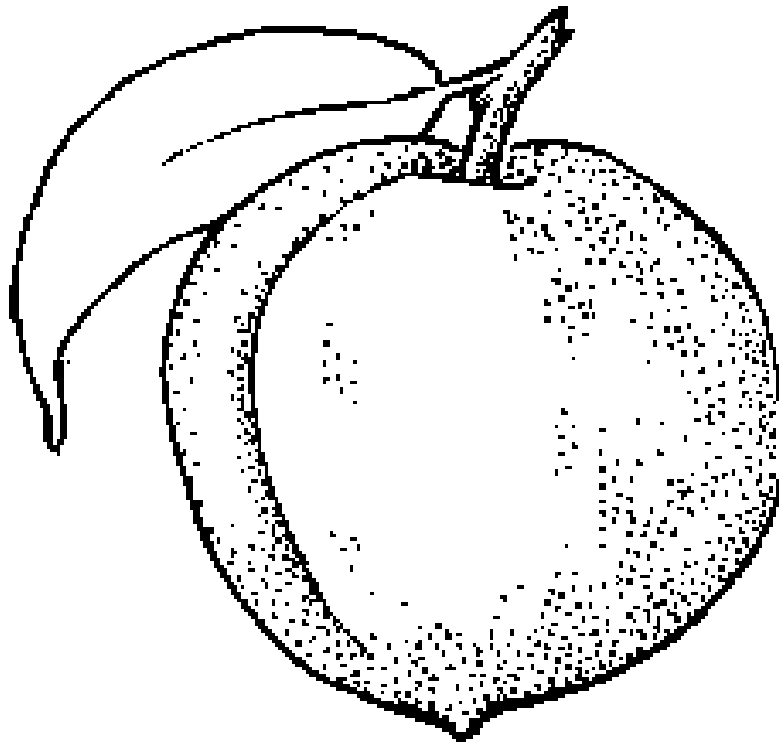
ch'at



Ja ch'ati ay chane` ja yok.

D d

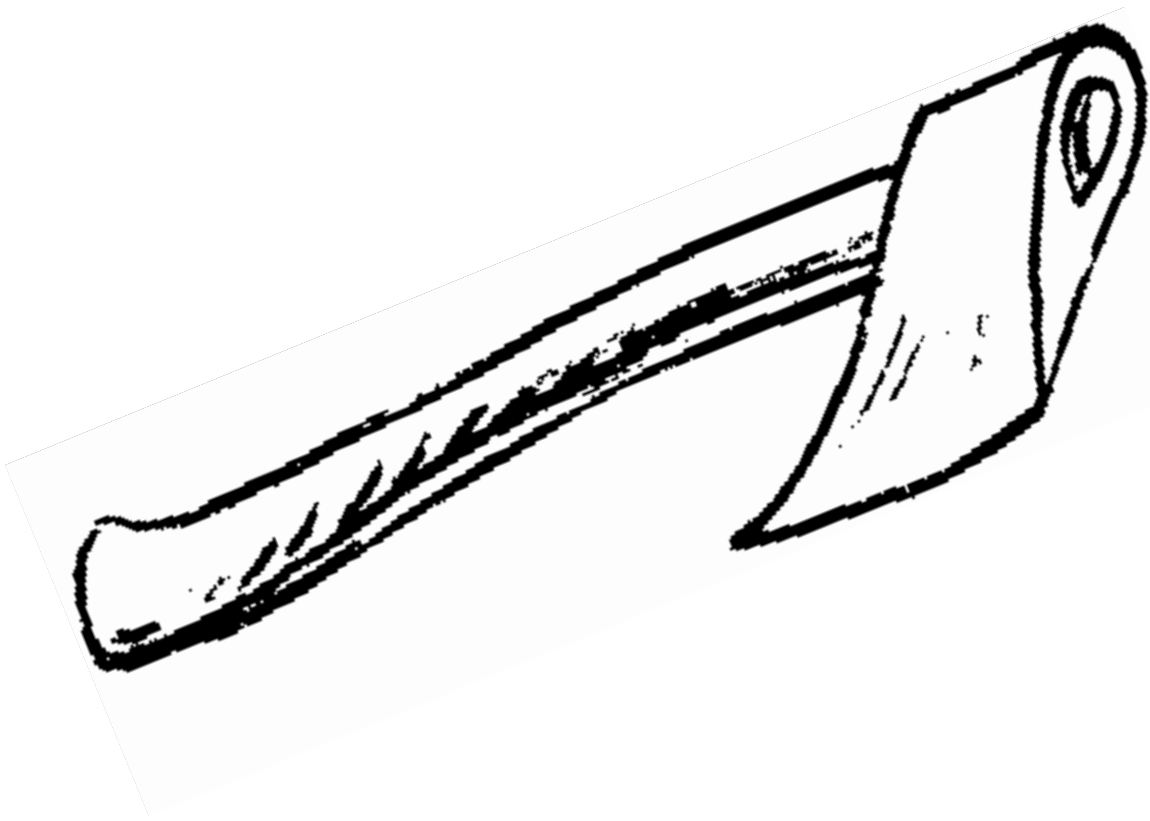
durasno



Jel niwan ja ta durasno.

E e

echej



Jel jay ja ye` ja ta echeji.

G g

goliya



Tuktukil yelaw ja ta goliya.

I i

ijkin



wa xjujpi nalan cha`an ja mi ijkini.

J j

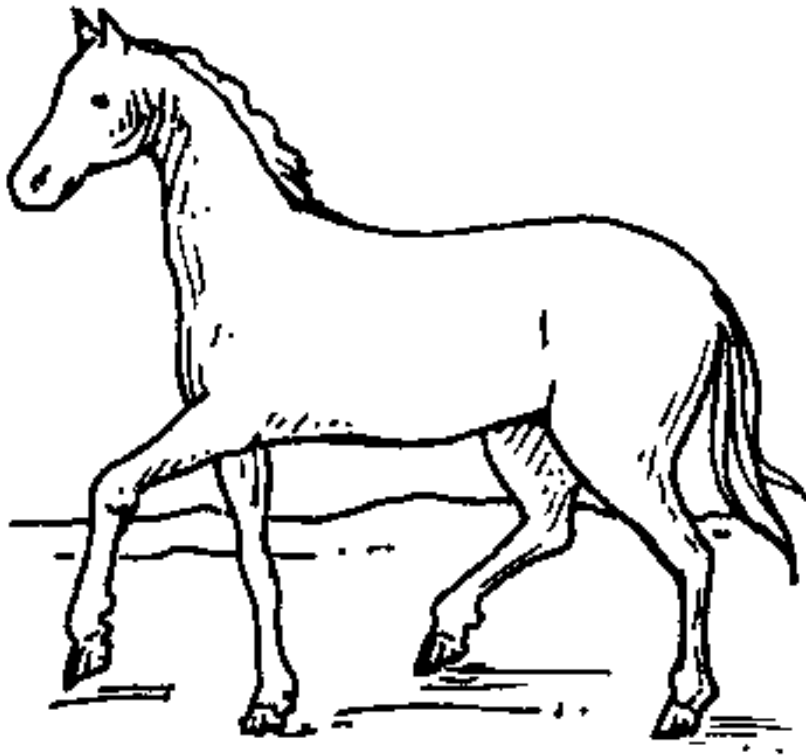
joj



Jel k'ik' ja yelaw ja ta joji.

K k

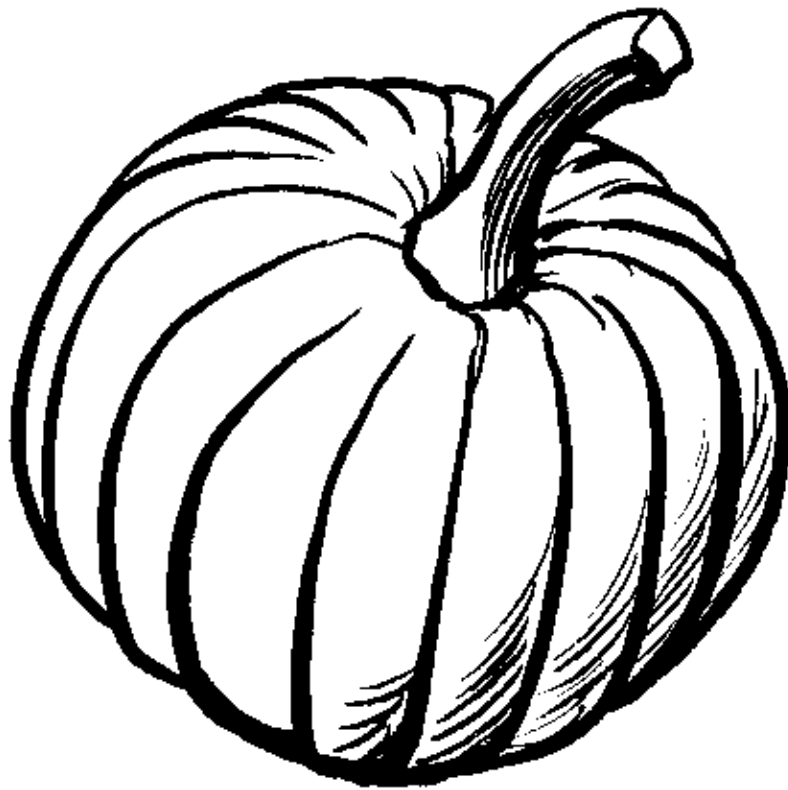
kawu



Ja ta kawu wan ajnel.

K' k'

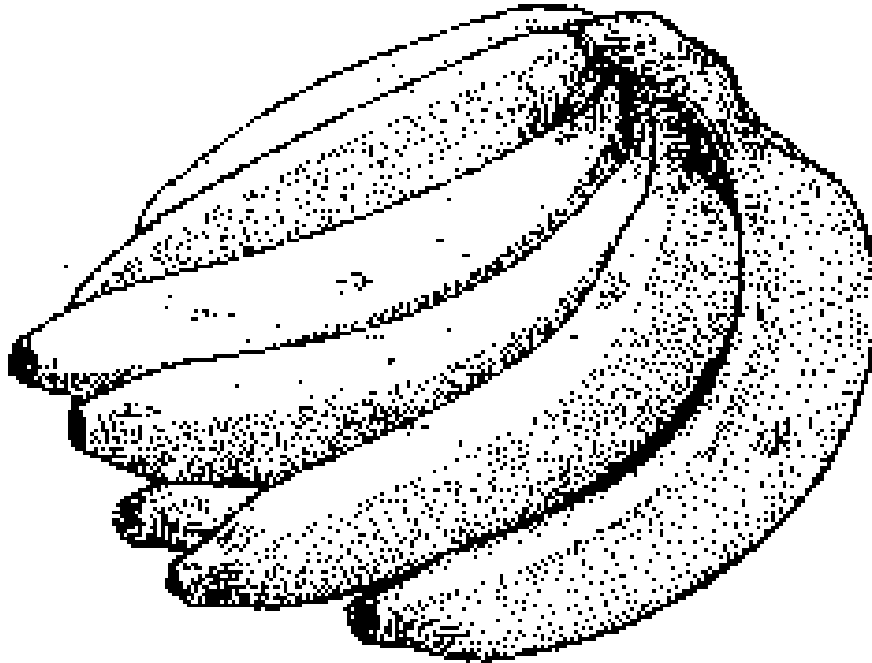
k'um



Ja ta k'umi k'a`i.

L 1

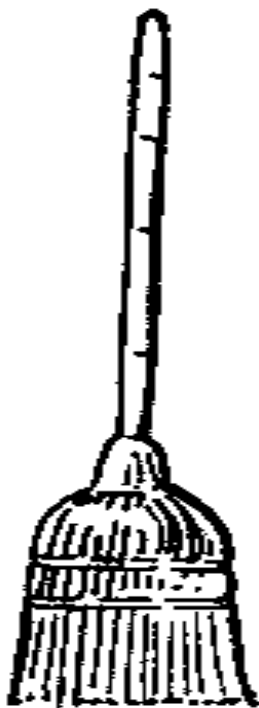
lob'al



Jel niwak ja tantik lob'ali.

M m

mes



Ja ta mes wa xmakuni mesulej.

N n

nichim



Ja yal nichimi jel x-ajb'ani yik'eli.

O o

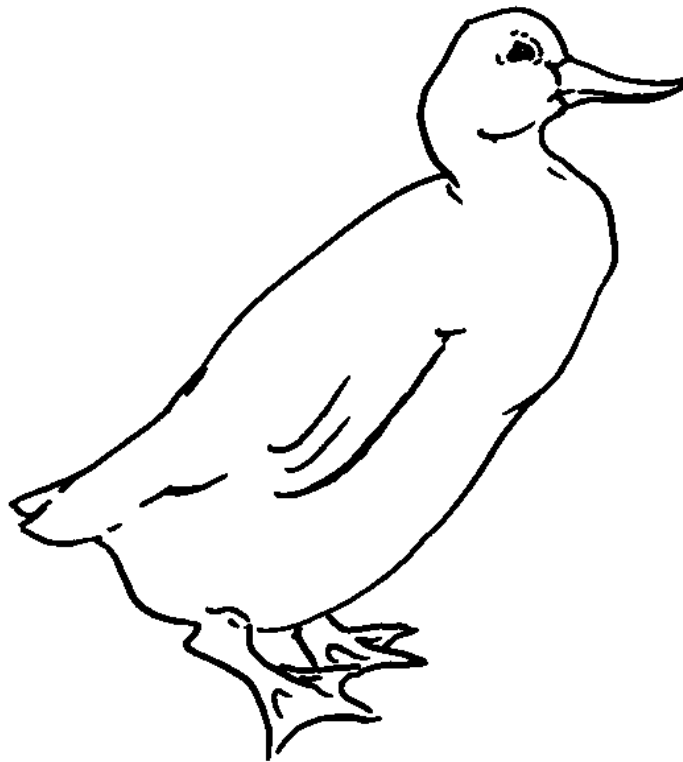
oxom



Chab'e ja xchikin ja ta oxomi.

P p

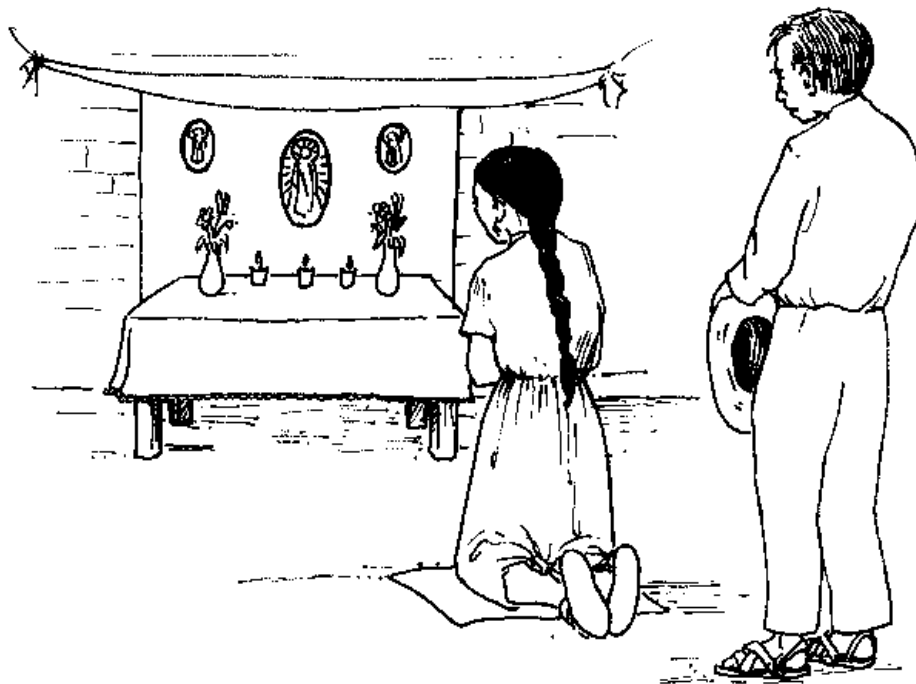
pech



Ja ta pechi wa x-atni b'a yoj niwan ja`.

R r

resal



Ja mi ixuk sok ja ta winiki wane` resal.

S s

sek'



Jel tsamal setan ja ta sek'i.

T t

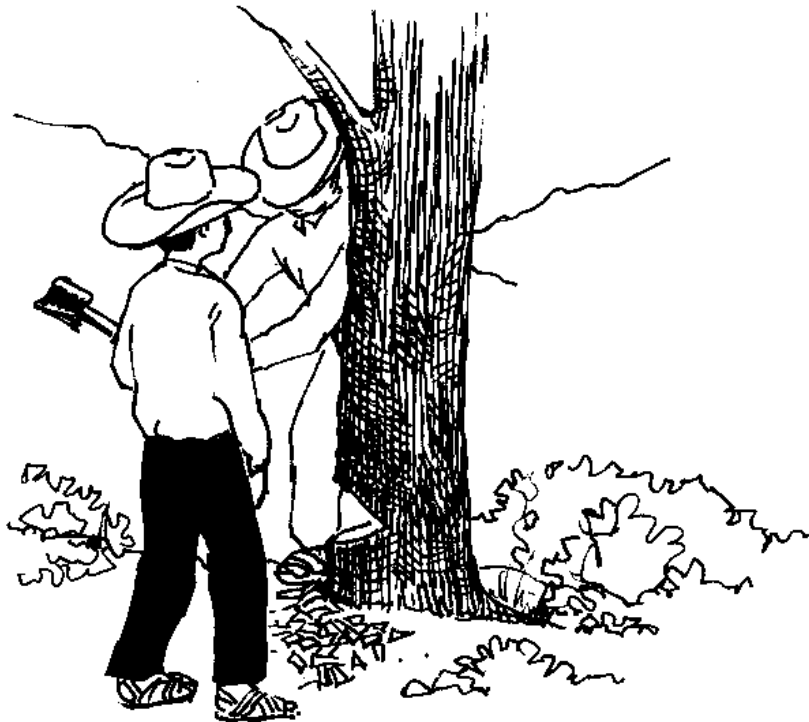
taj



Ja taji wa xmakuni b'a oj el ak'inte`.

T' t'

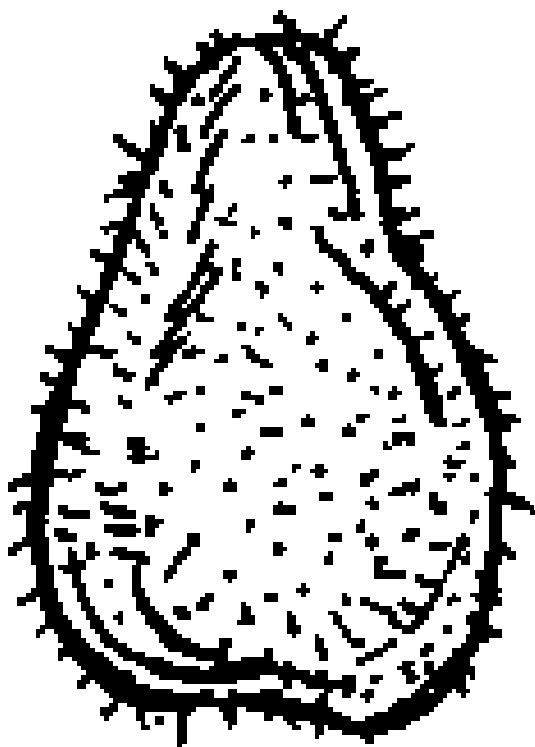
t'oso



Ja ta winik wan t'oso te` .

TS ts

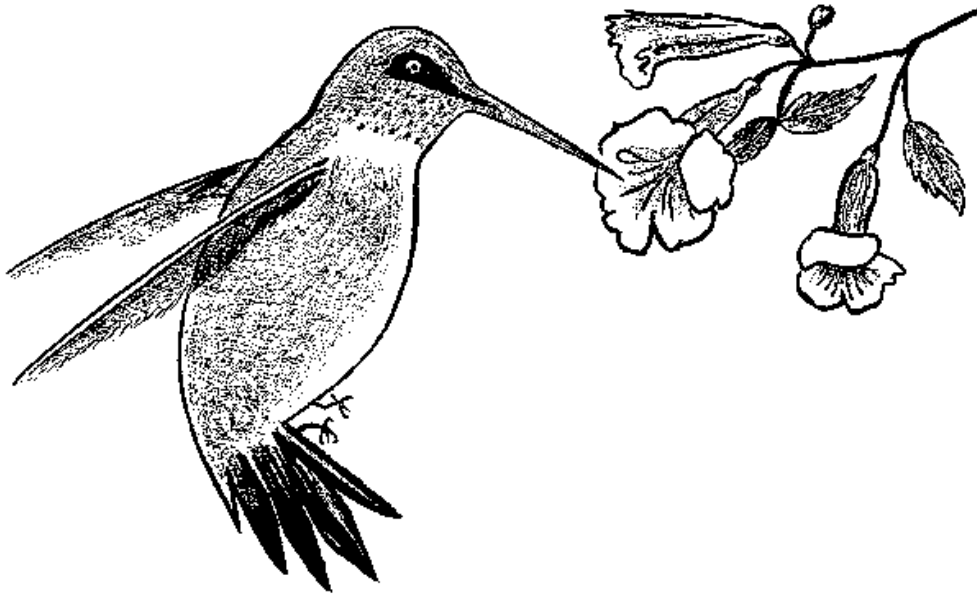
tso`yol



Jel ja sk'i`ixil ja ta tso`yoli.

TS' ts'

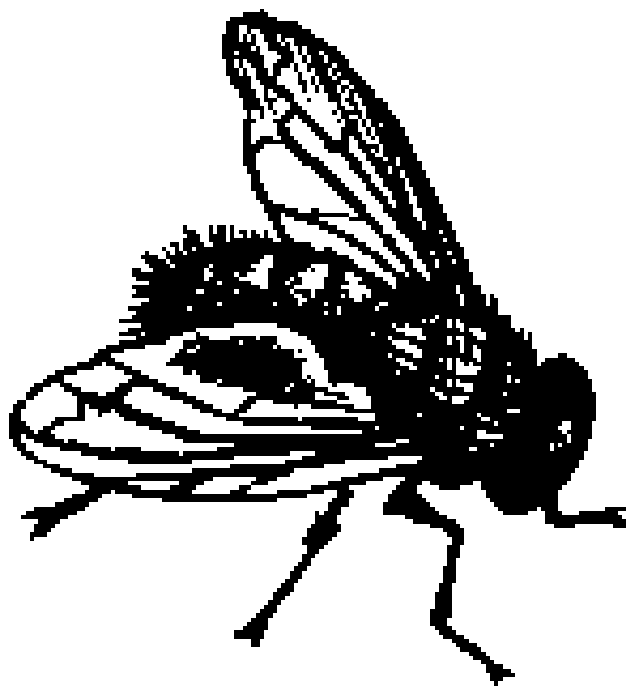
ts'unul



Jel jay ja sni ja mi`al ts'unuli

U u

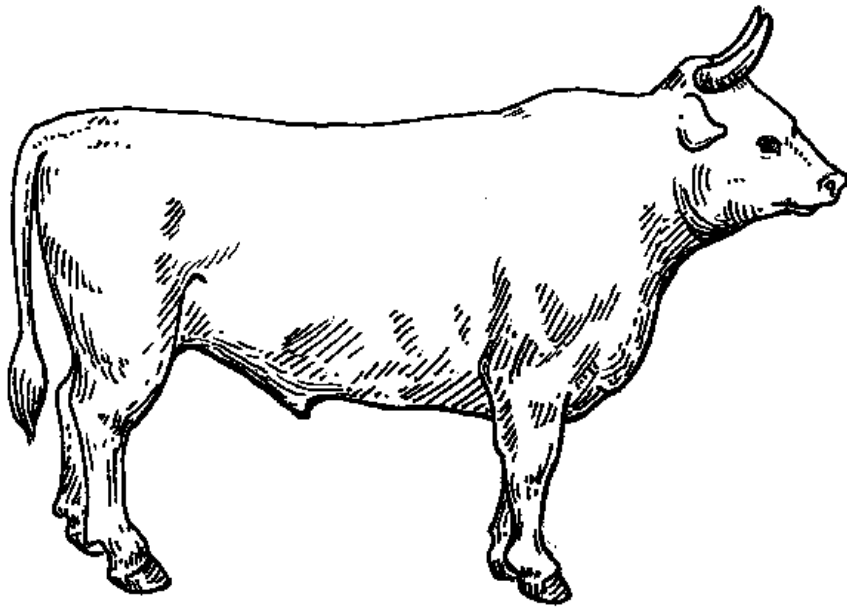
us



Jel xjononi ja mi usi.

W w

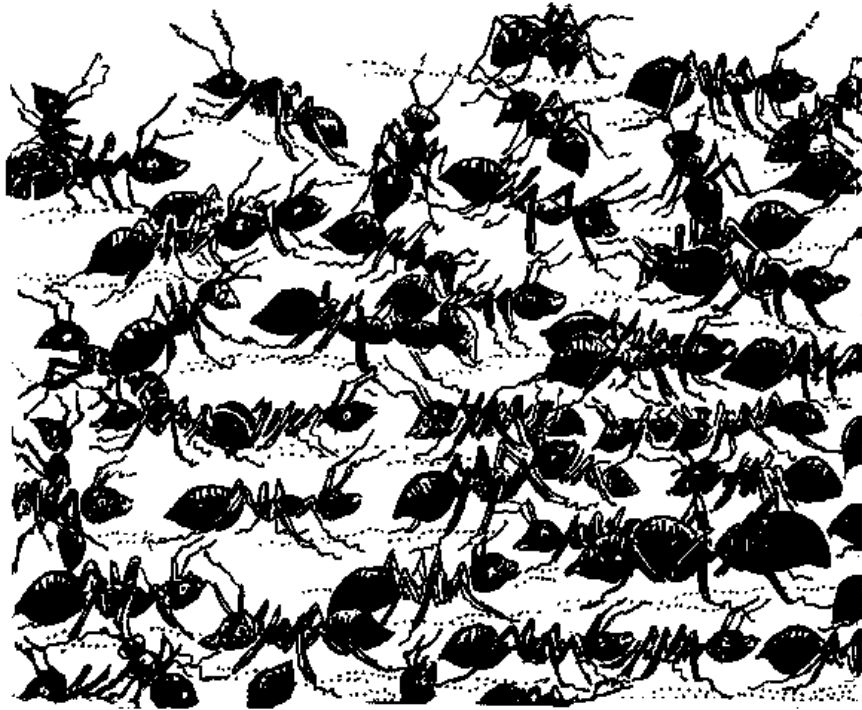
wakax



Jel k'ak' ja ta wakaxi.

X x

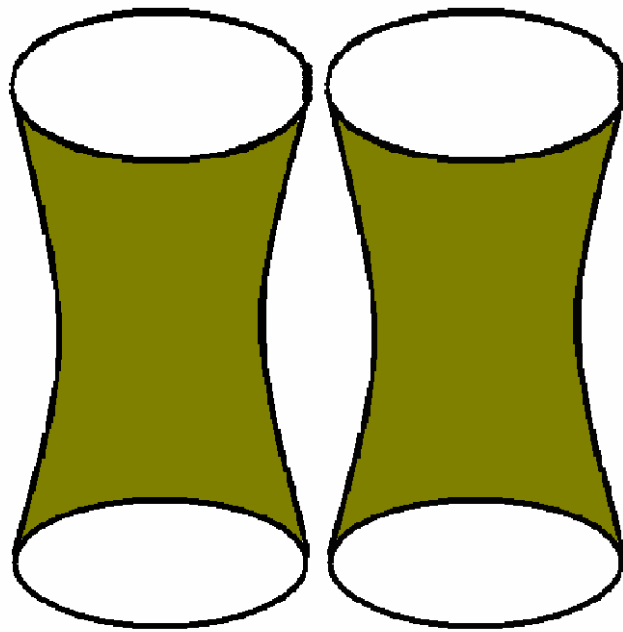
xanich



Jel yaj xk'uxwani ja mintik k'ik'il xanichi.

Y y

Yojket



Jel tsamal jopan ja yojol ja ta yojketi.

